

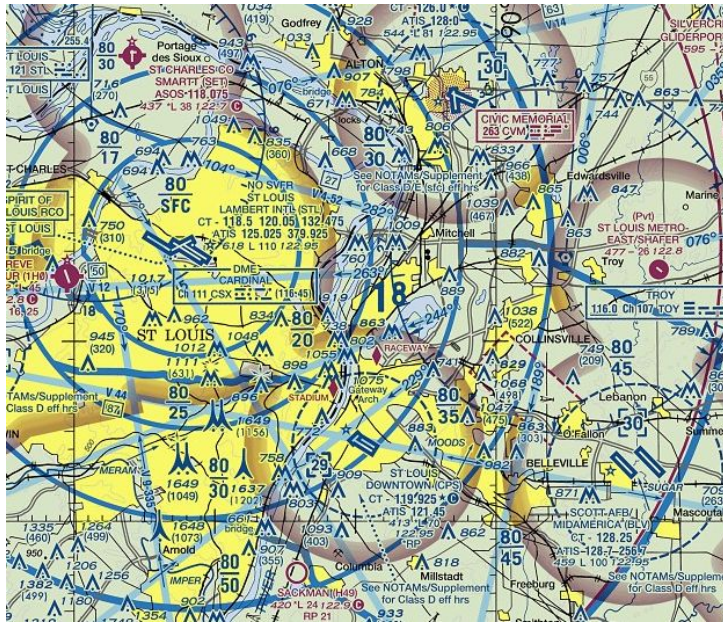
# *Arch Tour*

# Arch Tour Tips

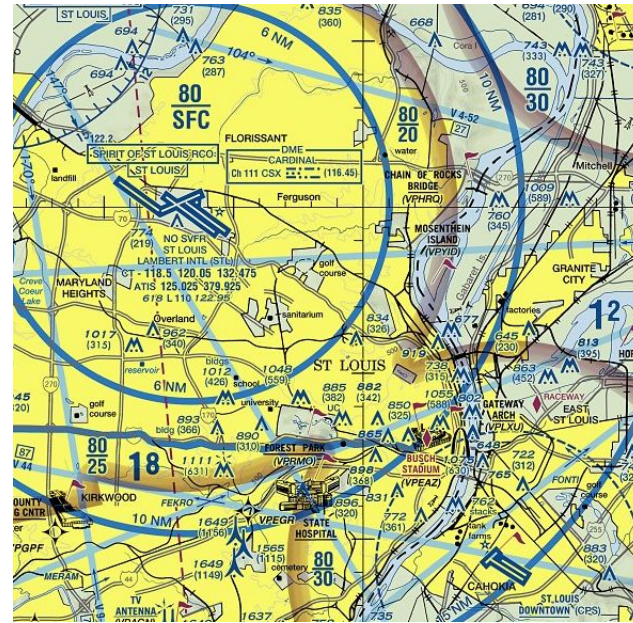
- ▶ Arch tours are a great way to burn an hour of gas, novel for friends and family, and gives you as the PIC some practice in a few areas.
- ▶ Recall some relevant rules:
  - ▶ FAR 91.119 Minimum Safe Altitudes
    - ▶ (a) Anywhere - An altitude allowing, **if a power unit fails**, an emergency landing without undue hazard to persons or property on the surface.
    - ▶ (b) Over congested areas - Over any **congested area** of a city, town, or settlement, or over any open-air assembly of persons, an altitude of **1,000 feet** above the highest obstacle within a **horizontal radius of 2,000 feet** of the aircraft.
    - ▶ (c) Over other than congested areas - An altitude of **500 feet above the surface** except over open water or sparsely populated areas. In that case, the aircraft may not be operated closer than 500 feet to any person, vessel, vehicle, or structure.
  - ▶ Airspace
    - ▶ Mostly in class E so maintain VFR Cloud Clearance (3 miles, 500 below, 1000 above, 2000 lateral)
    - ▶ Do not enter Class B without being explicitly cleared by ATC
    - ▶ Do not enter Class D without first establishing two-way radio communication

# Arch Tour Tips

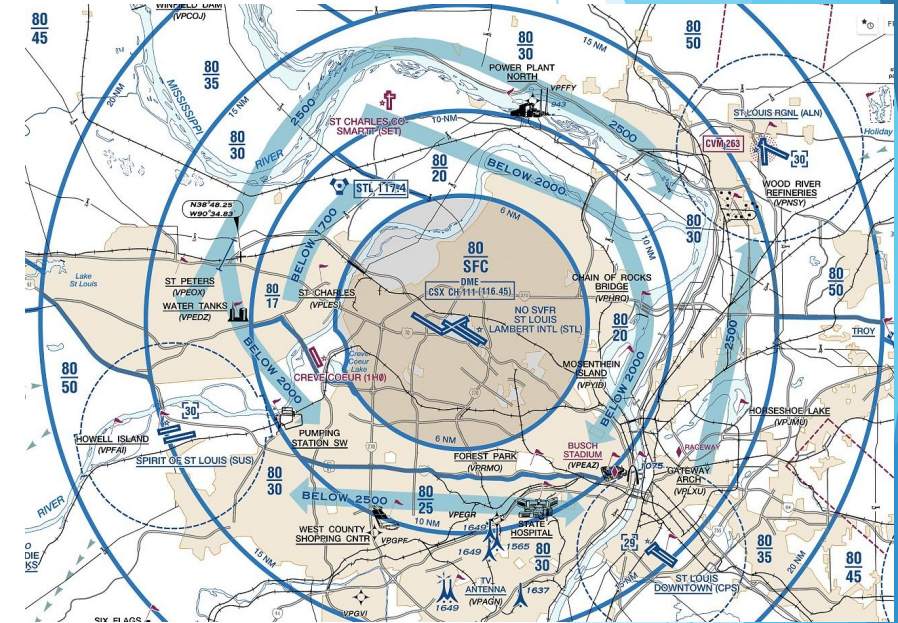
- ▶ VFR Flyway and STL Terminal Area Chart (TAC) are your friends.



Normal Sectional (Where is the Arch?)



TAC (Much more detail on landmarks, terrain, obstacles)



Flyway (paths/altitudes preferred for VFR pilots)

# Arch Tour Tips

- ▶ The preferred route is clockwise to give passengers the best view of the arch.
- ▶ Departing out of Creve Coeur 1H0, head to the water tanks and contact STL approach on 126.5 and ask for flight following
  - ▶ Normally start with just “VFR request” then when they have time let them know I’d like flight following for an arch tour going clockwise around the city.
  - ▶ If you want/need to be in the bravo airspace ask for it as well. I tend to stay in the 80/30 ring and fly between 2,500 and 2,700 MSL.
  - ▶ The ground is ~450 to ~650 MSL so this gives a few thousand feet of buffer. 16U descends at 700+FPM at best glide so you have a few minutes to figure out where to land if something goes awry.
- ▶ If you’re on flight following ATC typically clears you into Alton (Regional Tower) airspace without you having to talk to them.
- ▶ Normally near Horseshoe Lake ATC will hand me over to downtown tower or I’ll ask to change frequencies to contact them.
  - ▶ Normal call-up is to say altitude, over Horseshoe lake, and that I’d like to do an arch tour staying east of the river then departing to the west.
- ▶ Last bit of the trip is over densely populated areas (yellow) with tall obstacles and few places to land. Pay attention to roads (emergency landing), altitude, and towers!

# Arch Tour Tips

